



Samsung Digital Video Recorder **SVR-1620/900**

SAMSUNG
DIGITAL VIDEO RECORDER SVR1620



A must in Security

www.samsungcctv.com
www.webthru.net

Samsung Digital Video Recorder SVR-900 and SVR-1620 are non-PC based, high-performance, stand-alone systems that provide high quality video, large capacity storage, powerful networking and various user-friendly functions in a stylish digital design.

1) High-Quality Video and Fast Image Display

The Samsung DVR can provide 30 fps (frames per second) of high-quality video per channel, providing a maximum of 480 fps of full motion video for 16 channels.

2) Large Capacity Storage & Diverse Back-up Devices

The Samsung DVR is fully equipped with two internal HDDs and uses a removable HDD for easy back up. Up to 4 TB-class storage capacity can be gained by connecting to four external HDD-Bays (10 HDDs/Bay), which solves the lack of recording capacity problem. Separate from the DVR HDD, a removable HDD or a VCR can be used for back-up storage. Also, CD-RW is available as an option.

3) Powerful Networking

The Samsung DVR enables you to conveniently operate and manage the main features of the DVR, such as live video display, multi/single playback, search by time/event, set-up menu, and screen capture, all from a remote location using a viewer over a LAN, ADSL, or other network

4) Stability and Reliability

The Samsung DVR is a stand-alone system that is clearly superior to existing PC-based types in terms of stability and functionality. The unit is subjected to rigorous testing and quality control processes to insure their stability and reliability before the products are shipped.

5) Various user-friendly functions

The Samsung DVR is user-friendly: easy to follow menu structure, convenient firmware upgrade using a PC, video search / playback / menu setup with the Jog shuttle, and remote control operation of all functions.

The unit features motion detection, Pan/Tilt/Zoom control, timer recording, recording resolution selection, 8-step recording quality settings, multi-level password protection, real-time audio storage, up-to 1,000 event lists storage, log file, and OSD language selection.

6) Stylish Yet Ergonomic Design

To differentiate from other DVRs, Samsung has adopted a stylish yet ergonomic design that provides ease of operation, new button styling, soft button touch, and a front cover. Only the most frequently used buttons have been placed on the exterior of the unit.



Samsung
Digital Video Recorder

Samsung Digital Video Recorder

Convenient Event Search by the 1st Recording Image

Maximum 1,000 event Lists



Maximum 480 fps Live Image Monitoring

High density Live Image per one channel 30fps (frame/sec)



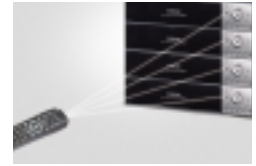
2X Digital Zoom

With the Sub-Window, the image can be enlarged with two times zoom



Easy Remote Control (IR)

4 DVRs can be controlled by one remote controller (IR)



Double Monitoring with Live & Playback Image in a single display with PIP

- Live and Playback Image in a single monitoring with PIP
- Main and PIP Image is selectable between the live and Playback PIP Image can be shifted



Pre-event Recording

Pre 5 second recording per each channel

Various Back-up Devices

Removable HDD, CD-RW

Powerful Digital Search and Playback with Jog-shuttle

Playback forward or backward with the change of the velocity



HDD Size Calculator

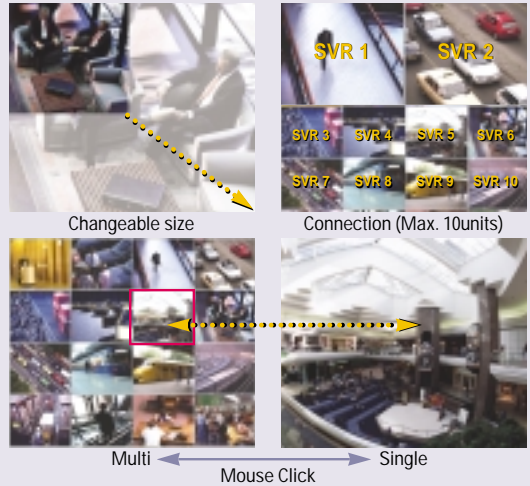
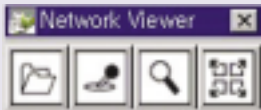
320 x 240 Mode										320 x 288 Mode											
VIDEO	Days	fps	step8	step7	step6	step5	step4	step3	step2	step1	VIDEO	Days	fps	step8	step7	step6	step5	step4	step3	step2	step1
			15KB	10KB	8KB	7KB	6KB	5KB	4.5KB	4KB				18KB	12KB	9KB	8KB	7KB	6KB	5.5KB	5KB
NTSC	1	3	3.7	2.5	2.0	1.7	1.5	1.2	1.1	1.0	PAL	1	3	4.4	3.0	2.2	2.0	1.7	1.5	1.4	1.2
		10	12.4	8.2	6.6	5.8	4.9	4.1	3.7	3.3			10	14.8	9.9	7.4	6.6	5.8	4.9	4.5	4.1
		15	18.5	12.4	9.9	8.7	7.4	6.2	5.6	4.9			15	22.2	14.8	11.1	9.9	8.7	7.4	6.8	6.2
	7	3	37.1	24.7	19.8	17.3	14.8	12.4	11.1	9.9		7	3	31.1	20.8	15.6	13.8	12.1	10.4	9.5	8.7
		10	86.5	57.7	46.1	40.4	34.6	28.8	26.0	23.1			10	103.8	69.2	51.9	46.1	40.4	34.6	31.7	28.8
		15	129.8	86.5	69.2	60.6	51.9	43.3	38.9	34.6			15	155.7	103.8	77.9	69.2	60.6	51.9	47.6	43.3
	10	3	37.1	24.7	19.8	17.3	14.8	12.4	11.1	9.9		10	3	44.5	29.7	22.2	19.8	17.3	14.8	13.6	12.4
		10	123.6	82.4	65.9	57.7	49.4	41.2	37.1	33.0			10	148.3	98.9	74.2	65.9	57.7	49.4	45.3	41.2
		15	185.4	123.6	98.9	86.5	74.2	61.8	55.6	49.4			15	222.5	148.3	111.2	98.9	86.5	74.2	68.0	61.8
	30	3	370.8	247.2	197.8	173.0	148.3	123.6	111.2	98.9		30	3	370.8	247.2	185.4	164.8	144.2	123.6	113.3	103.0
		10	1112.4	742.4	593.3	519.1	444.9	370.8	333.7	296.6			10	133.5	89.0	66.7	59.3	51.9	44.5	40.8	37.1
		15	556.2	370.8	296.6	259.6	222.5	185.4	166.9	148.3			15	444.9	296.6	222.5	197.8	173.0	148.3	136.0	123.6
	60	3	222.5	148.3	118.7	103.8	89.0	74.2	66.7	59.3		60	3	267.0	178.0	133.5	118.7	103.8	89.0	81.6	74.2
		10	741.6	494.4	395.5	346.1	296.6	247.2	222.5	197.8			10	889.9	593.3	444.9	395.5	346.1	296.6	271.9	247.2
		15	1112.4	741.6	593.3	519.1	444.9	370.8	333.7	296.6			15	1334.8	889.9	667.4	593.3	519.1	444.9	407.9	370.8
			30	2224.7	1483.2	1186.5	1038.2	889.9	741.6	667.4		30	2224.7	1483.2	1112.4	988.8	865.2	741.6	679.8	618.0	

* According to the resolution mode and recording days, HDD capacity is changeable.

SVR-1620/900

Network Viewer

- ▶ Simple and Convenient Control with Icon Design
- ▶ Multi-function
 - Drag the mouse resize the Image
 - Multi Viewer connection
 - One mouse click is all that is needed to change between multi-image screen and single-image screen



LOG File

History of the products to the maximum 1,000
: System set up, Power on/off, Menu set up, S/W up-grade...



Motion Detection with Multi-zone

Motion Detection with Multi-zone selection or Sensitivity from the selection of 3 grades (High / Mid / Low)



Storage Capacity

- ▶ More than One Month Recording Capacity with only One HDD
 - Built-in 3 HDDs including Removable Back-up HDD
 - Maximum 4 extendable, External HDD-Bay (10 HDD / Bay)
 - One HDD-Bay is for more than 1TB Image Recording

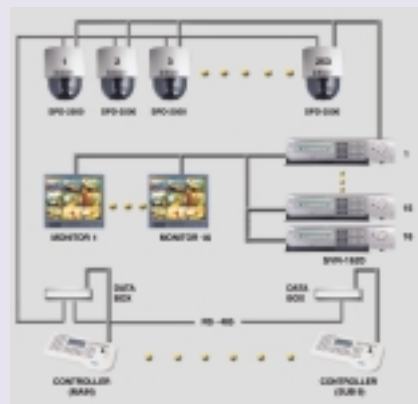
Excellent Stability and Convenient Use

- ▶ Stand-Alone type which is more stabler than PC type
- ▶ Firmware UP-Grade with PC
- ▶ Convenient Menu Setup
- ▶ Image search / Playback / Menu Setup with Jog-shuttle

Powerful Networking

- ▶ Control and manage the major functions in a distance with the network viewer through LAN, ADSL
 - Live Image Display
 - Multi / Single Playback
 - Time / Event Search
 - Set-up Menu
 - Image Storage

System Diagram



Security system upgrade... from analog to digital ...

- Maximum 480 fps digital live image display
- Full 60 Images per second recording speed
- Playback with single or multi images
- Simultaneous recording, playback, and back-up
- Recording more than one month in one unit
- Built-in motion detection with multi-area
- Programmable frame rate and image quality per channel
- Simultaneous monitoring with live and playback with PIP
- Event search with the 1st digital recording image
- Various network multi-view, multi-users remote viewing
- Remote control (IR) and CD-RW back-up
- One channel audio recording

What is a Digital Video Recorder?

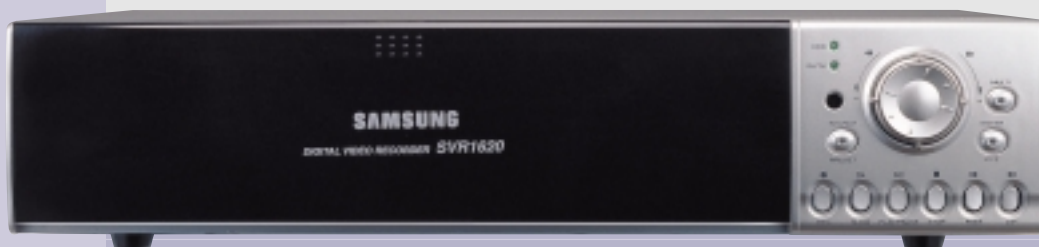
The newly styled DVR (digital video recorder) from Samsung Techwin is a new generation DVR for high quality and highly reliable video security systems. The units are compact recorders that combine the function of a video recorder and multiplexer into a single unit with remote control functions. The SVR series DVR is designed to replace the combination of an analog time-lapse VCR and multiplexer. The units are equipped with a jog and shuttle for convenient playback and search. A multi-camera display of live video from all cameras can be viewed while recording and backing-up at the same time. Recording can be selected as either manual or scheduled. The units have event setup capability where the user can select motion detection, repeat an pre-alarm recording. The motion detection, video loss and freeze functions can assist the user in analyzing a burst situation within a selected area.

All required functions in one unit.

Additionally, the recorded image size and image quality of each channel is selectable. Recording can also be done continuously while in the repeat record mode. The recorded data will be overwritten with the internal HDD is full. Backing-up of the images from the main system to the removable HDD storage rack or the external HDD bay is easy and convenient. The unit has 8 levels of image quality recording capability and a self-contained HDD capacity of three HDD's including 1 removable HDD. An external HDD bay is available for 10 additional HDD's bring the total capacity to 13 HDD's. A optional network card allows the SVR series to viewed and operated remotely via an intranet or the Internet. Authorized users are able to view recorded images and search video images simultaneously.

Best solution for your system upgrade.

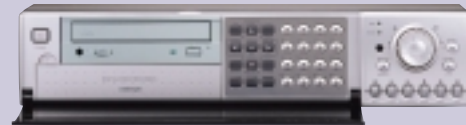
The SVR series will give you the best solution when changing to a digitally based security system. Again, just plug in the cameras, connect the external devices and power on. It is that simple! You will have convenience and confidence in your new digital video security systems.





Specification

Features		SVR-1620 / 900	
Video	Input	16 / 9	
	Output	Monitor	2 (Multi/Single, Playback : 1), (VCR Back-up : 1)
		Spot	1
		Loop Output	16 / 9
	Y/C	1	
Audio	Input	1 (selectable)	
	Output	Speaker	1
		Line	1
HDD (E-IDE type)		Internal : 2, R-HDD : 1 HDD capacity is selectable	
Multi task	P: Playback, D: Download (Back-up) R: Record, T: N/W Transmission		Yes
Display	Live	1, 4, 9, 16 (480 fps)	
	Playback	1, 4, 9, 16	
	PIP	Live & Playback	
Record	Manual	Yes	
	Schedule	Yes	
	Motion Detection	Yes (Multi-Area)	
	Alarm event	Yes	
	Pre-alarm	Yes (Max. 5 Sec)	
	Repeat	Yes	
	Compression	M-JPEG	
	Image Size	640X480, 640X240, 320X240	
	Image Quality Level	8step	
	File Size	46KB(640X480), 23KB(640x240), 12KB(320X240)	
Back-up	Removable HDD	Yes	
	CD-RW	Yes (option)	
	VCR	Yes	
Network (option)	TCP / IP	Yes (10/100 Base-T)	
	Live Display	Yes (Single / Multi)	
	Multi (playback)	Yes (Single / Multi)	
	Search	Yes (Time / Event)	
	Password	Yes	
	Device	R-HDD, CD-RW	
Archiving	Manual : Select by ch, time	Yes	
	Auto: With the event	Yes	
	Input	16 / 9	
Alarm	Output (Alarm, MD, V-Loss, Power Failure)		4
Log File	Yes		
VGA	Yes		
Digital Zoom	Yes (2X)		
PIP (Live/PlayBack)	Yes		
PAN / TILT / ZOOM	Yes		
OSD (On Screen Display)	Yes (Multi-Language)		
Extra HDD Bay	Yes (10 HDD / Bay)		
Jog & Shuttle	Yes		
Communication Connector	Serial	RS-232C / RS-485 / 422	
		Firmware Upgrade	
Password	8 Digital Password (2 Level)		
Electrical	Power Source	115/230 VAC, 50/60Hz	
	Power Consumption	75W	
Physical	Size (mm)	420(W) X 396(H) X 88(D)	
	Weight (Kg)	6	
Environmental	Operating Temperature	0°C~40°C	
	Humidity	30%~90%	



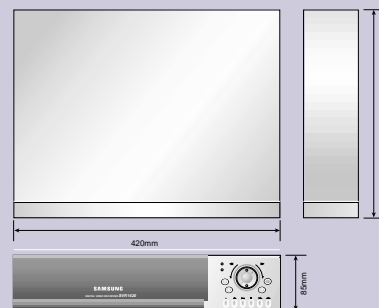
▶ SVR-1620



▶ SVR-900

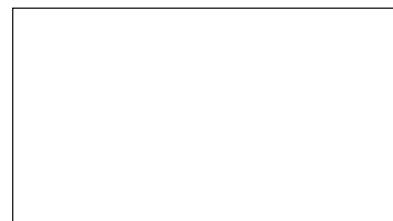


Dimension



Design and specifications are subject to change without notice.

■ DISTRIBUTED BY



www.samsungcctv.com
www.webthru.net

SAMSUNG TECHWIN CO., LTD
145-3 Sangdaewon 1-Dong, Jungwon-Gu,
Sunngnam, Kyungki-Do, Korea 462-121
TEL:82-31-740-8137~8141 FAX:82-31-740-8145

SAMSUNG OPTO-ELECTRONICS AMERICA, INC.
ELECTRONIC IMAGING DIV.
40 Seaview Drive, Secaucus N.J. 07094, U.S.A
TEL:201-902-0347 FAX:201-902-9342

SAMSUNG TECHWIN MOSCOW OFFICE
LENNINGRADSKY PR-KT, 37-A. KORP.14
RUSSIA, 125167, MOSCOW
TEL:7-095-258-9296,9298 FAX:7-095-258-9297

SAMSUNG OPTO-ELECTRONICS U.K. LTD (SOUK)
Samsung House, 3 Riverbank Way,
Great West Road, Brentford, Middlesex TW8 9RE, U.K.
Tel : +44 (0)280 232 3303 Fax : +44 (0)280 569 8385

SAMSUNG OPTO-ELECTRONICS GMBH
Am kronberger Hang 6, D-65824 Schwalbach/Ts., Germany
Telefon : +49 (0)6196 66 53 00
Telefax : +49 (0)6196 66 53 66

TIANJIN SAMSUNG OPTO-ELECTRONICS CO.,LTD
7 Pingchang Rd, Nankai Dist, Tianjin, P.R China
Post Code : 300190
Tel : (022)27614724-33821 27619698 Fax : (022)27616514